

ShwayComs Rymdtorget Cg-s4 : Dark energy platform DE-01 (bio-assist)

www.shwaycoms.com

Patent Registrerings Verket : 1300118-5

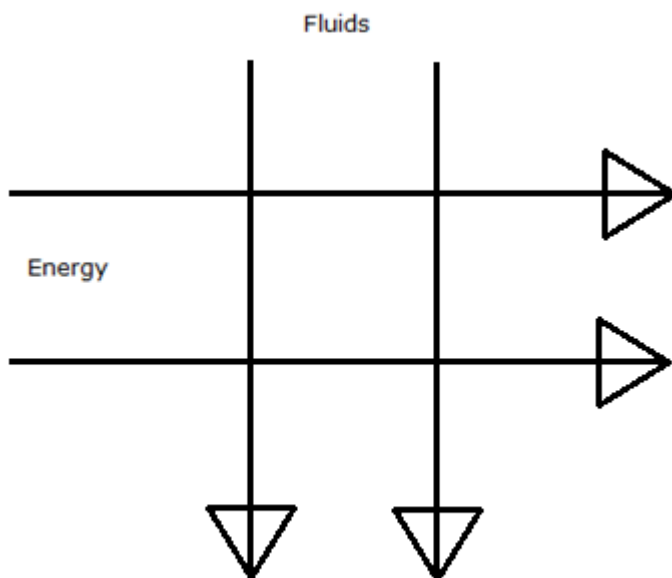
Brief:

This document is a patent application by and covers a overview of shwaycoms dark energy current platform; dark energy current usage to compete with electrical systems and is a previously unknown and undocumented energy transfer methodology which is a concept introduced 2013. After reading this document you will basically understand the mechanism basic principles of dark energy current and have a understanding of it's advantages over electrical current. Dark energy current usage is entirely an innovation. Dark energy current flow is a rational functional energy transfer platform innovation which introduces a innovation in bio mechanical energy transfer methodology unexpressed prior to this application in 2013 to the Swedish patent authority body PRV. This innovation is not a gift or token purchase; by collaboration with any third party nor from any collective with which I have collaborated. Dark energy current is a technology improvement innovation 2012-08-02. Presented here is usage which covers a introduction of application as well as elaborated proposal of use in biomedical energy transfer. This document should be reviewed by a physician and logistician for interpolation and assessment.

Concept overview:

By nature; magnetic fields are regarded as static however when switched and manipulated it becomes dynamic and can then be regarded as a current. Dark energy current usage for computing systems and energy transfer over distance in biomedical systems is a leap forward and advance of technology application in computing systems and energy transfer. The first noteworthy advantage over electrical energy transfer is the complete absence of ohmic heat generation and electromagnetic frequency dissipation in energy transmission in wired systems. Dark energy current conveyance also is not conducive to metal ion oxidation in bodily fluids nor is it conducted by salts present in tissue and plasma. This form of energy can be used to facilitate computing algorithms and drive for example mechanical motors using a different energy platform for wiring. Cable fare ways for dark energy current transfers need to be a magnetic material such as magnetic ceramic rare earth fiber (paramagnetic). Human tissue is commonly known to be over 80% water which is diamagnetic, shielding bio engineering products which use this platforms mode of operation from external magnetic interference. The energy source can be a distance 10" 20" away from components which can be used in biomedical systems placing most all abdominal constituents within reach.

Figure 1. Device energy and fluid flow paradigm



This figure indicates the operational flow directions of energy and fluids in a bio assist device.

Figure 2 a. Dark energy source generation



In the figure above a magnetic current (N) "on" is created using an electric solenoid which transfers through the magnetic fiber as a positive (N) dark energy source.

Figure 2 b. Source array

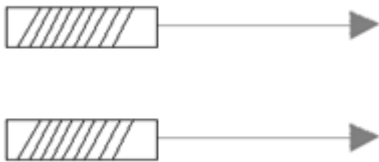
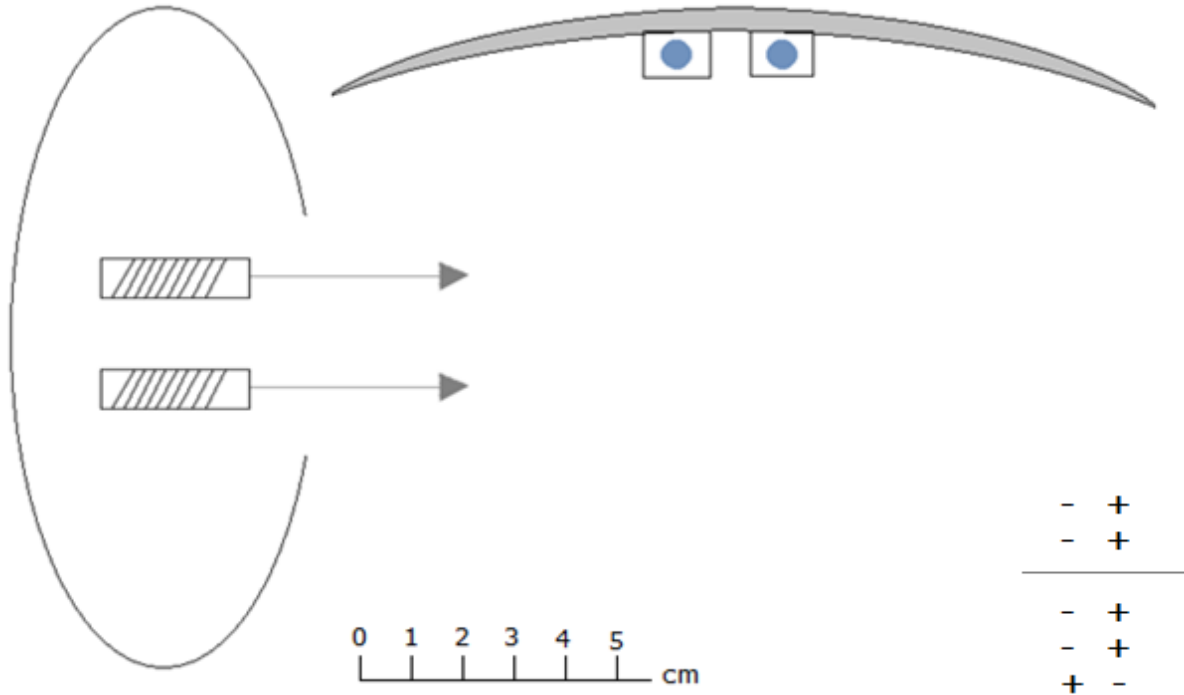
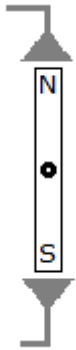


Figure 2 c. Source array with platinum thermal dissipation plate and RF rectenna silicon laminate. MSA (magnetic source array)



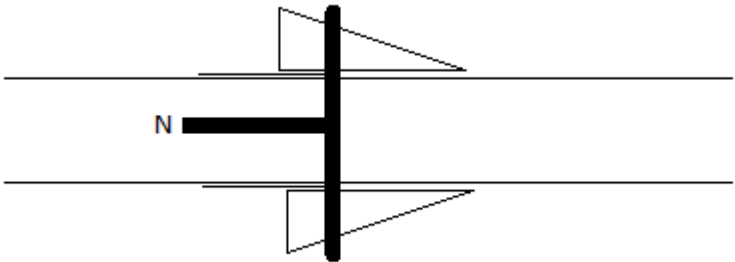
This figure shows a magnetic source array with a abdominal thermal dissipation plate to fluid by immersion.

Figure 2 d.



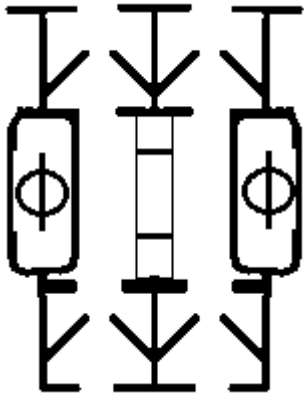
The figure above shows sub-functional dark energy oscillation generation using a magnetic impeller which is spun in the body or device by fluid flow for electric triggers and from less sensitive areas in the bearer.

Figure 2 e. pulse generator



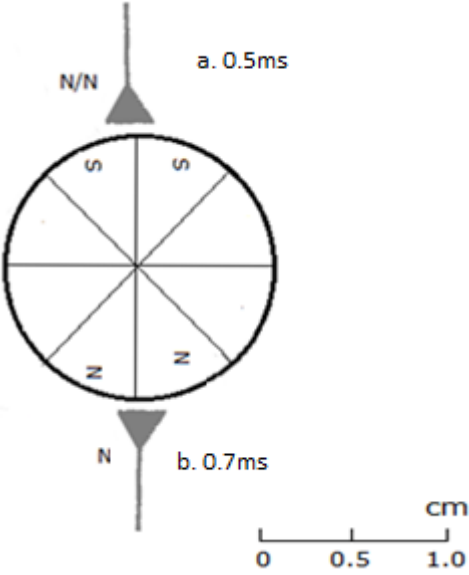
Biological pulse current generation in this example a magnetic pulse is generated by constricting a vessel or duct with an elastic coupled harness. Pulses of magnetic polarity (N) or (S) with information can transfer energy to biomechanical systems in the body allowing simple functionality.

Figure 3 a. FP-03 with A-01



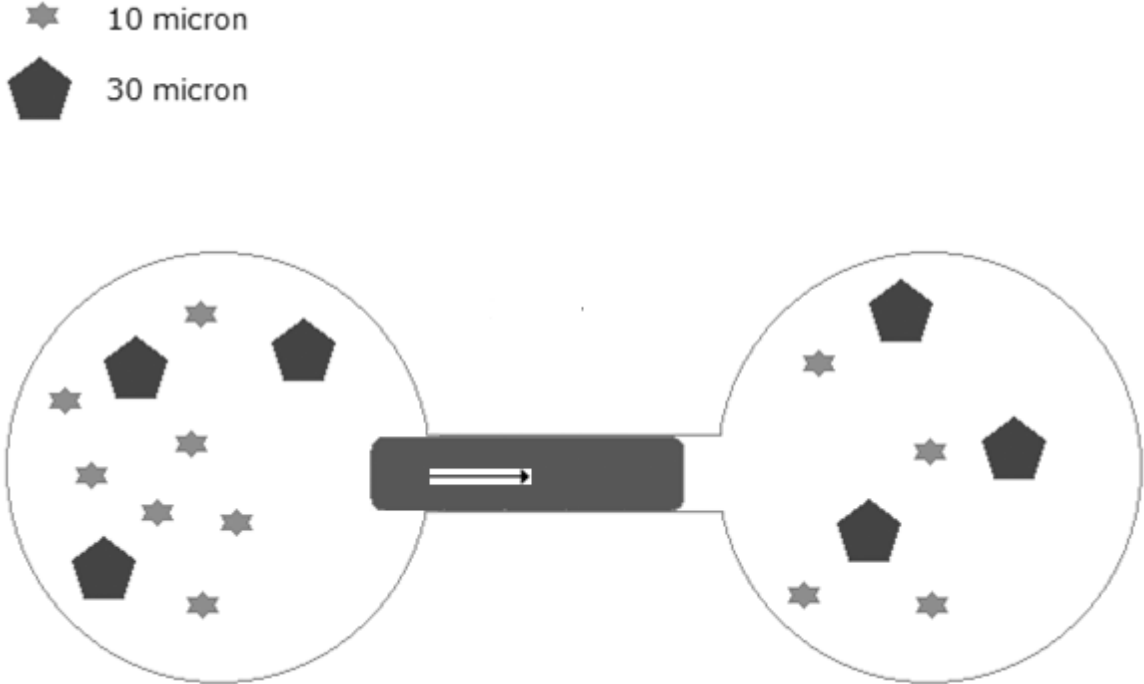
In the example above we see a motor similar to a DC electric deliberate motor powered by dark energy current transfer employing ceramic paramagnetic fiber wire taking advantage of magnetic resonance which can be further insulated with diamagnetic material to prevent interference in cable management for density designs. In order to operate the flow motor a intermittent pattern of (N) positive north is inputted in a varied pattern to the two fiber cables shown in the figure for example; set the lead cable to positive north for 0.05 seconds, interrupt (N) north positive in the lead cable and apply (N) north positive in the lower cable for the same length of time. This type of motor can be used in complex biomedical system designs.

Figure 3 b. Systemic top motor powered by dark energy current ie. flush pump mixer.



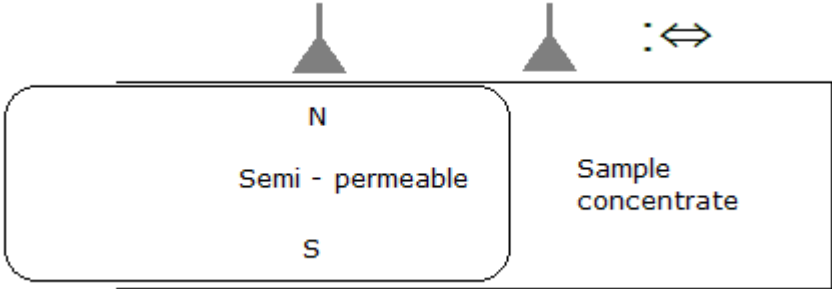
This is useful pump mixer type to use with dark energy offering ohmic heat free high energy performance and magnetic oscillation free function next to tissue operation for bio assist devices where stagnation is to be avoided.

Figure 4. PPM "cork bung" variable



Here we see a PPM variable metric which employs a a 20 micron cork bung part permeable solution divide made out of grapheme and a magnetic fare way. A paramagnetic cork bung divide moving in tandem with metric concentration which can be used as a controller for magnetic throughput or a MSA relay switch. The switching grapheme cork bung is kept free of material flow like salts by the flow of fluid at the metric sample side over a protruding sample end also material flows in both directions for this metric switch.

Figure 4 a. Paramagnetic part permeable switch ppm if



This figure shows an example of a permeability graphene regulated switch which acts as a gauge switch by design of the intending with what serves here as a template.

Figure 4 b. Paramagnetic part permeable graphene switch ppm true

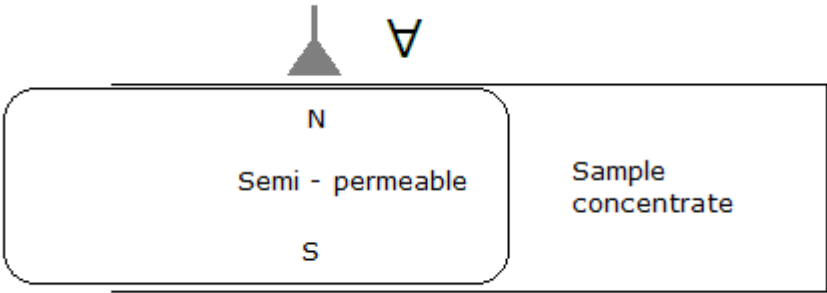


Figure 4 c. Paramagnetic part permeable graphene switch ppm false

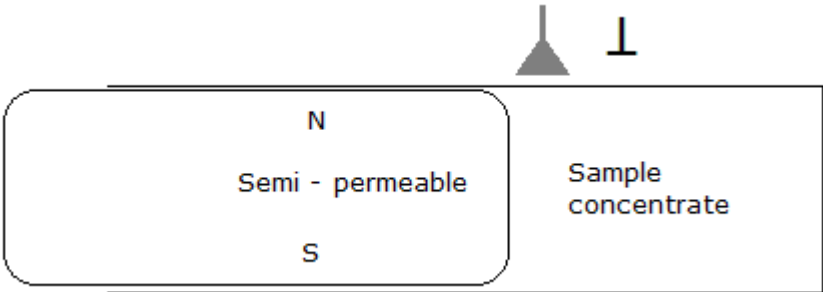
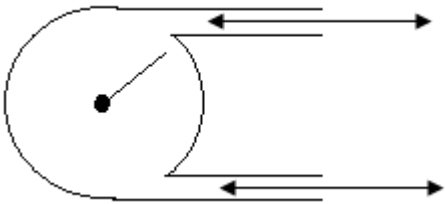
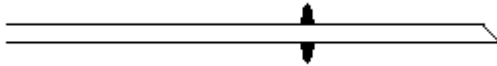


Figure 5. Rotation flush mixer with top motor



This figure illustrates a schematic drawing of a micro pump mixer.

Figure 6 a. Nano-tube filaments for fluid transfer



The figure above illustrates a Nano-tube with sub membrane plug which can be used for fluid transport in bio mechanical systems.

Figure 6 b. Nano-tube filaments for fluid transfer - pipette inserted

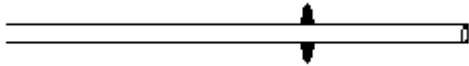
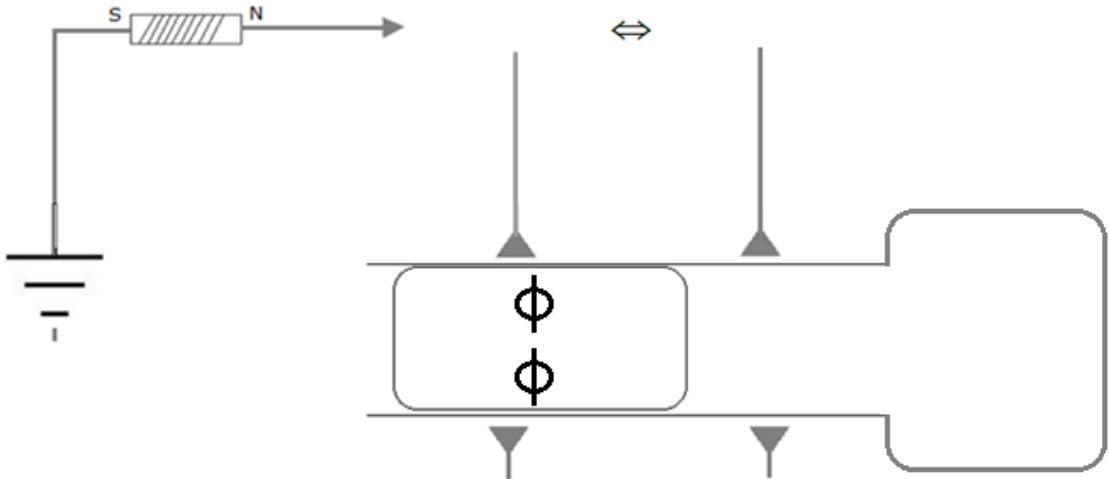
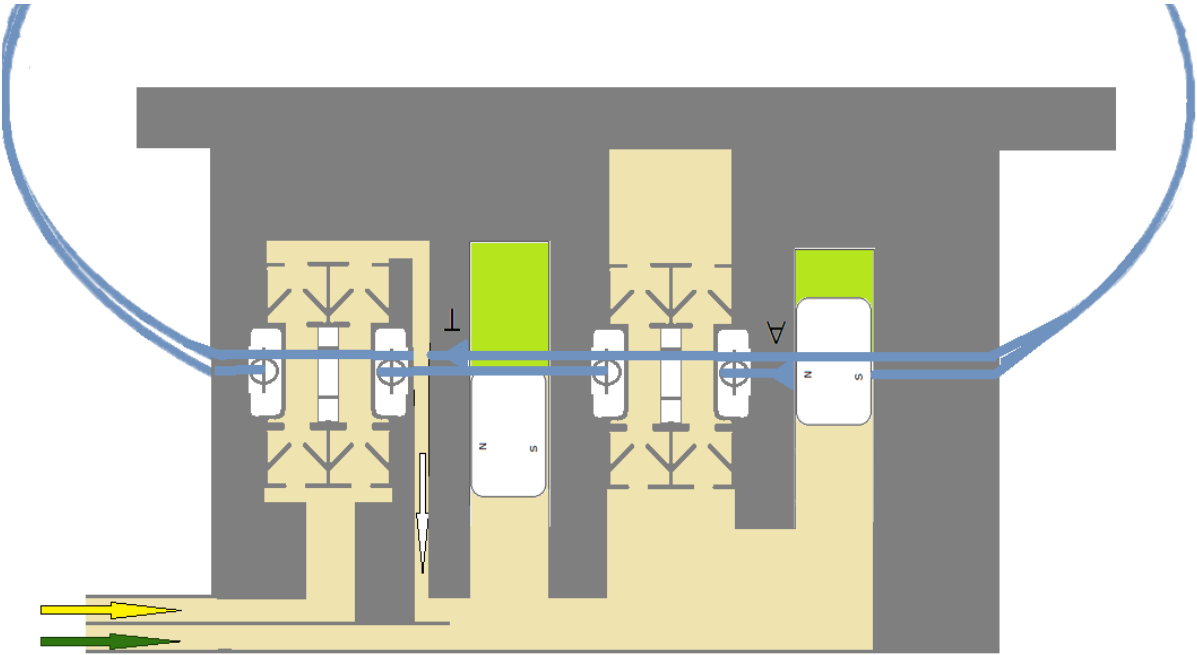


Figure 7. MSA Serial cable code

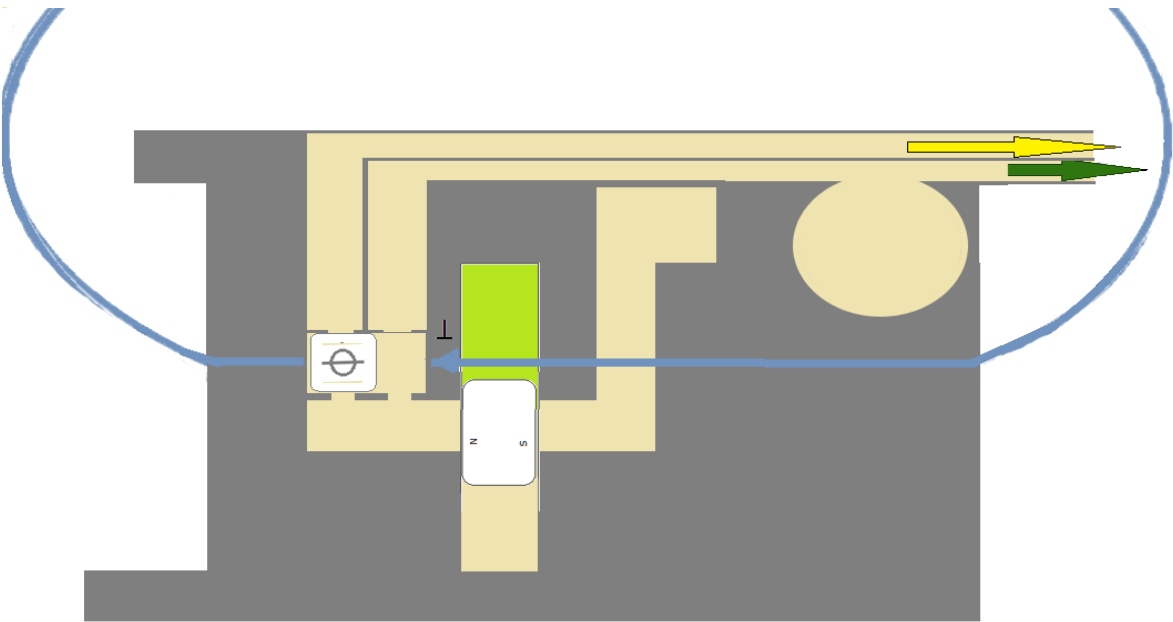


The figure above illustrates the approach to complete circuits which improves dark energy cabling through the appliance of half loop application designs that are more adaptable in complex applications. The south field of the source field is assumed as ground GND allowing potentially the use also of south field GND bridges.

Figure 8. Level 1.



Level 2.



In the figures above we see a two layer, one over the other, closed loop logic pump module (3~5cm) employing some of the components presented here. The source array for this component or complete device is a dual solenoid source operating in tandem at for example 0.5ms (a) and 0.5ms (b) with polarity gate. The yellow and green fluid indicator channels can for example represent urine or bile. This could be placed in a duct capsule prosthetic

Algorithms template to non functional figure 8 :

variables

left = "pump 1"

right = "pump 2"

gate = left

where

┌

left true left = 0

left false left = 1

⇒

right true right = 1

right false right = 0

subroutine

└

gate left true = 0

gate left false = 1

[custom figure 8 examples] always on system, as needed

left > right, left = 1

right > left, left = 1

left > right, right = 1

right > left, right = 1

right = left, right = 1

	Pump	Pump	Gate	
Channels	1	2		
Channel 1	1	0	1	left positive right, left = 1
Channel 2	0	1	0	right positive left, right =1
Dual	0	0	0	negative

	Pump	Pump	Gate	
Channels	1	2		
Channel 1	0	0	0	negative
Channel 2	1	0	0	right positive left, left =1
Dual	0	0	0	negative

	Pump	Pump	Gate	
Channels	1	2		
Channel 1	0	1	0	right positive left, right =1
Channel 2	0	0	0	negative
Dual	0	0	0	negative

	Pump	Pump	Gate	
Channels	1	2		
Channel 1	1	1	1	right positive left positive, right =1
Channel 2	0	0	0	negative
Dual	1	1	1	dual positive flush

[function volume mixer]

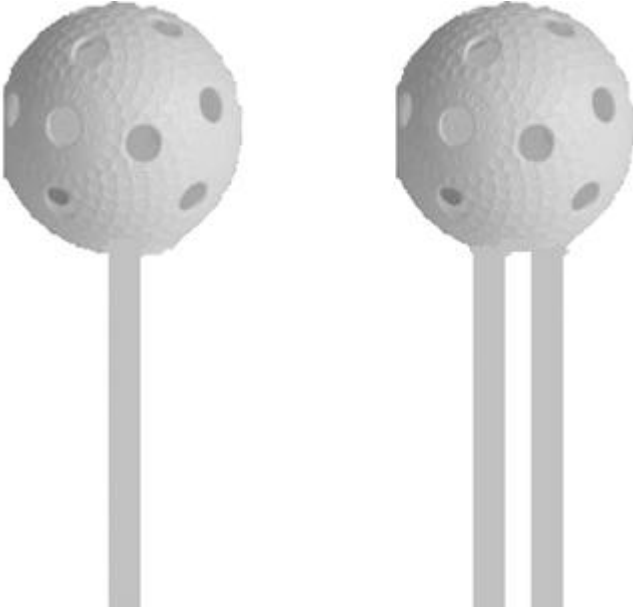
volume channel left = 1, right = 1 pool dilute

volume channel left = 1, right = 1 flush

[fluid routing options]

fluid channels left right pool, left right unique less pool

Figure 9. Upright duct pooler and loop reservoir



This duct type pooler reservoir can be used to aggregate bodily fluids like saliva, urine, bile, abdominal cavity fluid etc. such that a medic may want to use in prosthetics.

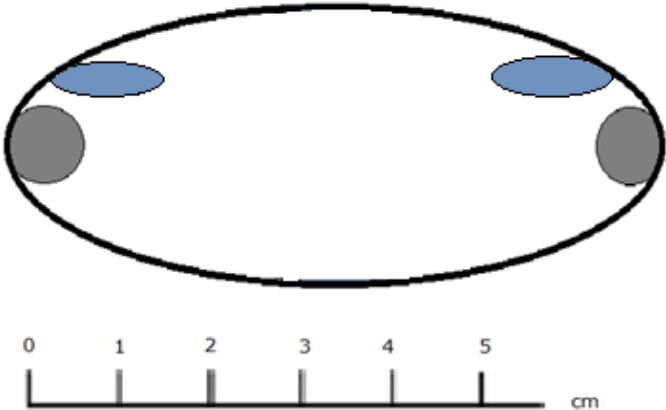
Figure 9. Logic gate functionality decision template



In the decision logic gate above (N) positive is applied as in a switch board in a decision making algorithm which can compute and make decisions following complex patterns as shown in figure 4. This sketch of logic gate employ shows a decision circuit for dark energy which can operate at a functional hz (Baud) in a algorithm computation bio-engineering device; serving for example in a organic duct. Such a duct could be a pocket created in deep tissue which surgeons could create and bind in micro surgery with veins from extremities of the body, widely known in media and cosmetics, ins and outs approached differently. Another advanced approach would be to grow tissue for the patient; alternatively a small donor muscle possibly can house the device with oxygenation surgery having been performed; reportedly such muscles would atrophy.

Device sanitation patterns could incorporate built in options of ultrasound, ultraviolet or surface charge status to induce a hostile energy environment.

Figure 10.



This figure illustrates a duct capsule for a dark energy module made of a suitable jacket material with silicon coating.

Requirement:

This concept for energy transfer is a breakthrough of process as well as technological advantage over electrical systems. The technologies to manufacture exists where the practice, usage and conception does not; I claim ownership as proponent and originator of this concept step towards biomechanical solutions. This type of energy transfer alternative does not exist 2013 and I am the fabricator of this concept which is in fact untried as yet. This energy source platform competing with electric biomechanical platforms is completely justified for what would be a significant technology improvement for certain bio-engineering applications or space faring computer equipment.